



Normeca AS

HMK MOBILE HOSPITAL



**WHEN THE HOSPITAL
COMES TO THE PATIENT**



TRANSPORTATION

The hospital consists of several highly mobile Multispace trailers that can be transported on normal roads like any other semi-trailer.

RAPID DEPLOYMENT, FAST ASSEMBLY

Having arrived at the destination, the mobile hospital can quickly be set up and hospital operation can commence.

Each trailer is leveled and stabilized automatically by the four built in hydraulic legs.

The trailers can either be used with their built in power plant and water supply or they can be connected to an external unit.

The internal width of the trailer is increased to 6,4m by extending the Multispace slide outs (pods).

CLEVER INTERIOR DESIGN

Each trailer has a floor space of approximately 71m² and is divided into several rooms according to the customer wishes.

The trailers are all fitted with air-conditioning, dimmable lights, fixed power outlets, bedside gas panels, bathroom with toilet and shower...and many other features that make the trailers both comfortable and effective in treating patients in need.

Each trailer can be equipped according to specific requirements.



EACH HOSPITAL CONSISTS OF 7 OF THESE 13.6M TRAILERS



DOUBLE PICTURE LAYOUT OF THE INTERIOR



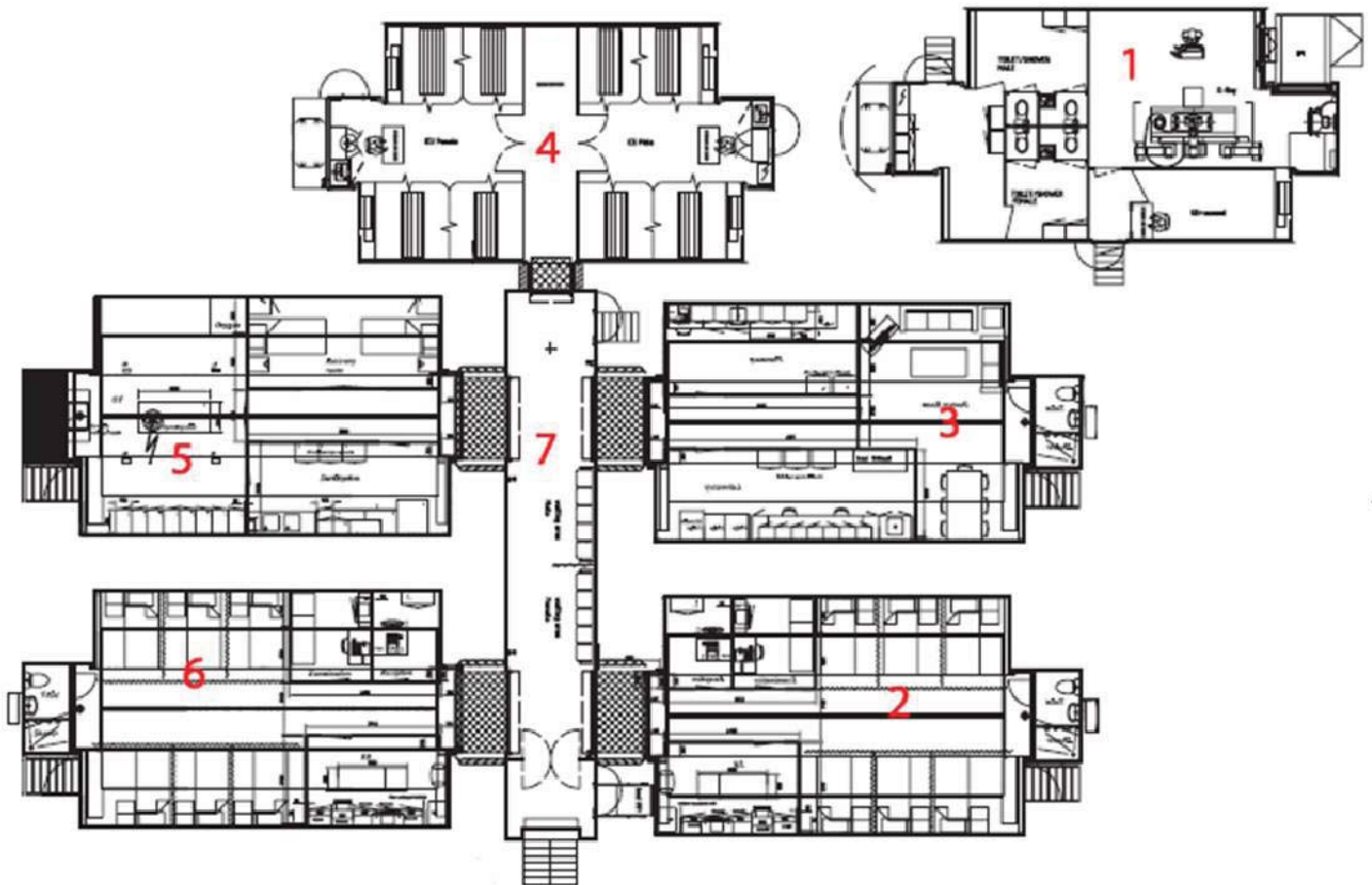
EXAMINATION ROOM IN MALE ADMISSION TRAILER



COMPLETELY AUTONOMOUS HOSPITAL UNIT

The mobile hospital is built to correspond to other stationary hospitals with all its functions and facilities. In this case the hospital consists of 6 Multispace trailers and a fixed semi trailer, functioning as a docking unit. When docked together, it is possible to walk from one trailer to the other without being affected by the surrounding conditions. This ensures great comfort and safety.

It is also possible to use the trailers as stand-alone units when only a smaller operation is needed.



- | | |
|--|---|
| 1. X-Ray unit (Radiology) | 5. Operation Room (OR) trailer, sterilization and recovery room |
| 2. Admission trailer for male patients | 6. Admission trailer for female patients |
| 3. Staff room, Laboratory and Pharmacy | 7. Corridor / docking trailer |
| 4. Intensive Care Unit (ICU) | |

DISASTER RELIEF, EMERGENCIES AND TIME-LIMITED EXTRA CAPACITY

The mobile hospital is unique being able to respond quickly and deploy fast to major emergencies, such as a Tsunami or Earthquake, but also very suited for time-limited periods such as to Mekka in Saudi Arabia during the Islamic pilgrimage where extra capacity in the healthcare system is needed.



DIMENSIONS

	Exterior:	Interior:
Length:	13.6 m	13.46 m
Width, transport:	2.55 m	
Width, assembled:	6.36 m	6.25 m
Total height:	4.00 m	
Internal height, lower section:		2.55 m
Entrance height above ground:		1.38 m
Internal height pods:		2.30 m
Pod length:	11,1 m	
Total floor area:		Approx. 71 m ²
Net weight:	Approx. 16.000 kg.	

Furthermore each unit is equipped with air condition, power generator, gas panels (oxygen), computer network, and toilet + shower in each of the admission and doctors rooms.

